

Type of Project:	Mental Health Centre	Country:	Kosovo
Approach:	Contracted works	Realisation: Year:	2005
Project name:	Mental Health Center in Peja.	Version	1
		Date:	November 2005



Initial Situation, Context:

Among others, two surveys carried out by the Centres for Disease Control in Atlanta (CDC), respectively in August/September 1999 and May/June 2000, highlight the aggravation of the prevalence data concerning the mental health of the Kosovo population. In particular, the prevalence of symptoms of PTSD in the representative samples of the interviewed population has increased from 17% in November 1999 to 25% in June 2000. The average prevalence is higher in the rural areas than in the urban ones (29.4 versus 22.9) and among women versus men (28.5 versus 18.6) (See table below).

Goals, Beneficiaries:

The goal is to help the Community based Mental Health Centre (CMHC) to provide services for the people in the Peja area. These services are: Improving the mental health services quality and efficiency; enhance mental health and quality of life of the population belonging to the Gjilan district; avoid process of social exclusion.

The working group "Mental Health Task Force" for Kosovo was initiated by WHO and given the task of developing a draft for setting up modern and contemporary psychiatric care. In principle, it is recommended The programme's objective is to establish a community-based health system backed up by family doctors, nursing staff, advisers, social workers and volunteers under the guidance of psychiatrists.

Approach:

Specialised team sets up and manages a Mental Health Center and supervises 2 Protected Apartments. The Centre will serve social, rehabilitative and treatment aims. The objectives in the Centre will be based on learning the basics: self-care, independence in daily life, social contacts etc. A psychiatric doctor and nurses will work in the Centre. During the day, above the external patients, they will also receive the patients from the House of Integration.

Partner(s):

The following partners participated with this programme:

- FOM (Federal Office for Migration) in Switzerland for financing the programme.
- The regional director of the Mental Health in Peja.
- The Municipal department of reconstruction and planning, and the cadastre department.
- The architect Qemajl Nalbani in Peja for project and supervision.
- The contractor Muratori from Peja for the execution of the project.

Implementation/Results:

The Centre is foreseen to receive patients for daily care of mentally illness. It was designed to receive up to 25 patients. One Doctor and 5 nurses are taking care of the patients.

Constructions:

Year 2005. Traditional construction with external thermo insulation.

Ground floor with 1 reception desk, 4 offices for the staff, 4 rooms for patients and therapeutic activities, 1 kitchen with dinning room and the necessary toilets facilities and technical rooms.

First floor with 4 offices, (administration, nurses, reserve, pharmacy and the necessary toilets facilities.

Combined central heating, with Fuel (5'000 litre tank).

Cost, Financing:

Total cost of the project: € 308'000 (CHF 470'000)

Financed by FOM, (Federal Office for Migration) € 231'000 (CHF 358'000)

Financed by SDC, (Swiss Agency for Development and Cooperation) € 77'000 (CHF 120'000)

Studies 10'300; Building 279'200; Kitchen € 6'200; Equipment € 10'000; Divers, charges € 2'300.

Problems/Constraints:

The budget was not sufficient for the external works to be included; but the Ministry of Health got a credit of € 25'000 to do it, as well as to complete the furniture and equipment.

Lessons Learned: What was useful in the approach?

Very good collaboration with the architect, particularly during the supervision of the works.

Lessons learned: What should be done different next time?

It would have been good to have the credit for the whole project (including external works) to avoid delays to occupy the building after completion.

Preconditions and Limitations for this approach:

- The first precondition was the general program of development of mental health in Kosovo by the Ministry of Health and WHO that includes the implementation of this type of structure in each Kosovo region.
- Close Cooperation with local Authorities. (Mental Health, Cadastre, Urbanism, water and power departments etc.)
- Construction Office with administrative and technical capacity to implement the project.

Evaluations:

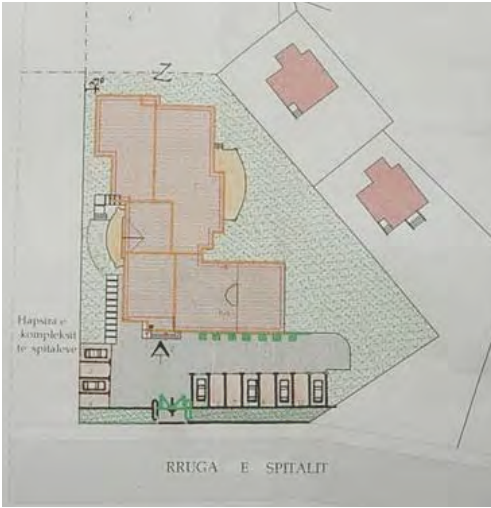
The practical evaluation will be obtained from the users (CMHC Peja) and from partners like the Swiss Red Cross who is supporting the CMHC Peja in training the staff.

For further information:

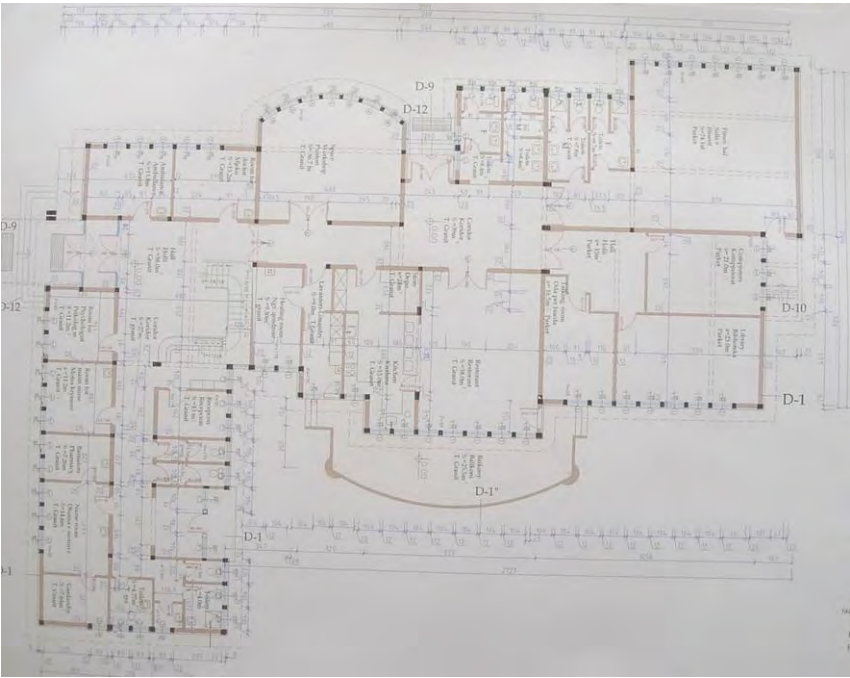
Recommended Contacts:	Coof Pristina
Recommended Institutions:	SDC/SHA, desk Europe +CIS
Recommended books/reports:	SDC/SHA Fact Sheet June 2002: "The Swiss Contribution"
Relevant other projects (links):	Similar SDC/SHA Projects in Gjakova, Gjilan, Prizren, Mitrovica.

Plan Mental Health Centre Peja

Situation plan



Ground floor plan



First floor Plan

