

Projects library of the specialized group for construction

PUBLIC BUILDINGS

Project	School
Project name	Post Conflict Rehabilitation- Chava Hindu Primary School
Country	Sri Lanka
Region/town	Chavakachcheri, Jaffna
GIS data (WGS 84)	
Typology	Class rooms/ multi purpose hall/ sanitary & facilities
Project type	New construction.
Annroach	contracted construction
Beneficiaries	Returnee / IDP / refugee
Climate	Hot, humid
Special constraint	Occasional Flood
start / end of project	2008 / 2009
Country GNP	2200 USD/cap



Partners

Organization (donor)	Financed by SDC Swiss Agency for Development and Cooperation
IO/NGO partners	
GO partners	Secretary of the Ministry of Education Northeast Province School Works Branch Jaffna Provincial Education Director Zonal Education Director

Context to project

Initial Situation	Major armed conflict prevailed between Liberation Tigers of TamilEelam (LTTE) and the Government of Srilanka (GoSL) since 1980. During the year 2002, a cease fire agreement signed (CFA) and lasted till January 2008. Then the hostilities resumed in the country. Due to the prolonged, war many essential Government infrastructures such school buildings either badly damaged or neglected without maintenance.
Goals, Beneficiaries	The SDC programmed to rehabilitate selected schools to facilitate the resettled children as well as to help future resettlement in Chavakachcheri division. As a part of this program, a primary school called Chava Hindu primary was identified to rebuild at a relocated location with plenty of additional space for the play ground , school garden and other activities. The land of the existing school is very limited to provide adequate facilities and the structure is in very poor state. This will be repaired and turned into a hostel for the near by Hindu college in Future. The present structure is designed to accommodate the sufficient number of 700 students of the area..
Implementations/Results	To permit the displaced families to return to a normal life and to provide adequate facilities for the existing students by rehabilitating the building.



Humanitarian Aid construction group

Reference data (comparative)

Land plot	5,715 m2	Number of blocks	Sets 1, Set 2 & Set3
Classes/rooms per blocks	12	Number of units	3
		Total beneficiaries	700
latrines	9	Other infrastructure	Principal room, computer room, Library, staff room, room for clerical staff, multi purpose hall with stage, over head water tank.& watcher's room
Ground floor (incl. walls)	790.1 m2	Floor (incl. walls)	
Total surface	1496.1 m2	Surface / beneficiary	2.13 m2/ beneficiary
Volume (outside dim.)	4250.8m3	Volume / beneficiary	6.07 m3/ beneficiary
Heated surface	1,207.8 m2	Heated surface/beneficiary	1.72 m2/ beneficiary
cost cof complex	359,562.40 USD	cost/beneficiary	USD/beneficiary
Total cost	367,566.30 USD	Self help (beneficiaries)	8,850 USD/beneficiary

Approach to results

Initial Situation	Chava Hindu Primary was affected by the conflict and falls under the category Reconstruction of damages/ partly damaged/ neglected building during the Conflict period..
Approach	<p>Additional class rooms, a multi purpose hall, library and 2000gln over head water tank have been requested by the School Development Society, the principal and the teachers supported by the Government Agent, the additional Director of Education and the School Works Branch Office Jaffna. The school rehabilitation work started in November 2005</p> <p>SDC decided to withdraw its expatriates from Jaffna, for security reason on May 2006. In June 2006 after evaluation of the situation, the decision was taken to suspend all construction projects and the relevant authorities were informed. In the second half 2008, SDC resumed work on Chava Hindu Primary school on priority basis and finished during the visit of the back stopper with collaboration of the school authorities.</p>
Problems/Constraints	Since August 2006, the vital A9 is closed again and the Peninsula is back to a conflict reality. SDC declared to be ready to resume activities when normalcy would return. Since the resumption of the construction work the biggest challenge was the complex bureaucratic approval procedure to obtain basic construction material like sand and cement.
Lessons learned	The isolation of Jaffna had its price in time and money and still a positive impact possible.
Evaluation	

Legal framework

Political attachement	Chavakachcheri, Thenmaradchi, Jaffna
Type of ownership	Ministry of Education Northeast Province

Humanitarian Aid construction group

Construction information

cost repartition

Construction

	<u>Set1</u>	<u>Set2</u>	<u>Set3</u>	<u>Total</u>
Preliminaries	77,400.00	59,400.00	36,400.00	173,208.00
Excavation and Earth Work	18,252.00	5,580.00	17,030.40	40,762.40
Plain cement concrete (PCC) Works	578,883.00	556,314.00	149,775.60	1,284,972.60
Structure Reinforced cement concrete Works	2,514,536.70	2,485,750.92	821,946.00	5,822,233.62
Reinforcement work	2,500,054.72	2,312,119.17	298,262.64	5,110,436.53
Masonry Work	74,157.60	30,764.40	83,505.60	188,427.60
Concrete block work	1,192,272.00	,333,971.00	395,328.00	2,921,571.00
Tinker and metal work	660,000.00	726,000.00	-	1,386,000.00
Roof Work	3,316,320.00	3,628,020.00	1,155,660.00	8,100,000.00
Carpentry & joiner Work	3,296,754.26	1,743,354.42	347,088.00	5,387,196.68
Plaster Work	1,351,460.40	1,697,936.45	437,269.20	3,486,666.05
Painting and Decoration Works	563,498.40	591,444.00	78,440.00	1,233,382.40
Electrical Installation	913,070.00	285,840.00	48,960.00	1,247,870.00
Plumbing & drainage Work	-	-	180,480.00	180,480.00
Miscellaneous work	367,537.94	235,317.46	793,150.96	1,396,006.36
Total amount after deduction of 2% discount as per contract agreement				37,836,950.71
Amount of extra work executed				<u>2,360,276.64</u>
Total Amount				40,197,227.35
(1USD= 113LKR)				

Urban planning

Distance to : villages 0 km
 Public transport available

For further information

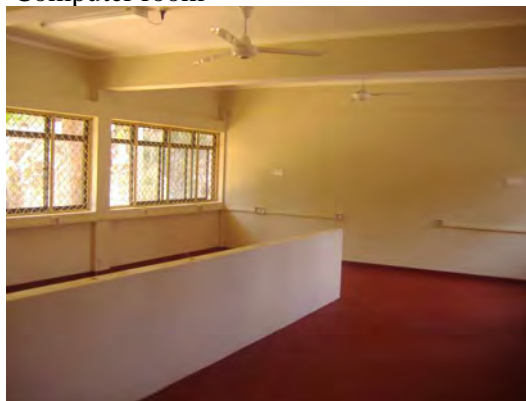
Involved SHA construction group consultants N/A
 Other involved SHA consultants Ueli Salzmann/Marc-Andre Buenzli
 Author / Contact: Hans Peter Etter/Rajaratnam Srikantha
 Recommended Institutions:
 Recommended partners:
 Recommended books/reports: N/A
 Relevant other projects (links): N/A

Pictures **Chavakachcheri Hindu primary**

Side view



Computer room



Ground floor passage of Set 1



Library



Rear View

