



Projects library of the specialized group for construction

SCHOOLS

Project	Postconflict School Reconstruction
Project name	Meesalai Vigneswara Maha Vidyalayam Primary and Secondary School, Thenmaradchi, Jaffna District, Sri Lanka

Country	Sri Lanka	
Town/Region	Meesalai DS Div. Thenmaradchi District Jaffna	
Project type	Reconstruction	
Typology	2 classrooms (only SDC Building) Primary and Secondary school, from Grade 1-13; (in SDC building only Secondary School)	
Approach	Private sector contracted construction	
Beneficiaries	Affected people in response to the conflict (IDP's, Refugees, Returnees)	
Climate	Tropical, hot and humid	
Special constraint	Weather conditions (Monsoon season)	
Start / End of project	2004-2005	
Country GDP	1'296 USD/cap (Dec 2010)	
Pictures	SDC Jaffna, Maps UN OCHA	

Partners	
Organization (Donor)	SDC-HA
IO/NGO partners	-
Government partners	Ministry of Education Northeast Province Provincial Education Director Zonal Education Director School Works Branch, Jaffna

Context to project	
Initial situation	<p>The Meesalai Vickneswara Secondary school (2-Storey-Building donated by SDC) is visited by students attending grade 5-13 and was originally founded in 1932. The school is located in the surroundings of Chavakachcheri, the capital of Thenmaradchchi Division.</p> <p>A primary school, associated with the Meesalai Vickneswara school is located close to the secondary school but on a different site. In the late 90's, during the height of the fighting, the majority of the population of the area fled Thenmaradchchi and the school was closed down. While the primary school passed the turmoil of war relatively unscathed, the secondary school complex was subsequently occupied by Sri Lankan security forces. During that time, buildings and infrastructure suffered badly, on the one hand through becoming a prime target for the fighting fractions and on the other hand through negligence and lack of maintenance. Today's number of enrolled students is 356. This is still less the 550 which was the enrolment figure before the conflict. With the continued return of IDPs to the area however, it is likely that this figure will be exceeded sometime soon, testing the school capacity severely.</p> <p>The complex consists of 7 single storey and one two storey Building (SDC), all of which are situated along the perimeter of a square site leaving a fairly large open area in the middle of the property which is being used for sport activities, roll cars etc.</p>



Humanitarian Aid construction group

Goals, Beneficiaries	The project supports the Government's efforts in answering to an expected growing demand for appropriate educational facilities in the recently opened returnee area of Chavakachcheri. Through the reconstruction of the Meesalai Vigneswara Maha Vidyalayam Secondary School an approximate number of 356 students do actually benefit (all Buildings)
Implementations	SDC-HA pledged to reconstruct on behalf of the request of the School Development Society, the principal of the School and the teachers. The project was supported by the Government Agent, the additional Director of Education and the School Works Branch Office Jaffna.
Results by January 2012	40 students are currently attending classes in the Two-storey Building, build by SDC. 150 students are regularly attending classes in the science Laboratories and the Computer Room, situated on the Ground floor of the Building.

Reference data

GIS data (WGS 84)	N 9.67° E 80.19°	Altitude	1 msl
Land plot	2'782.21 m ²	Number of blocks	9 (1 donated by SDC)
Classes/rooms per blocks (only SDC Building)	2 per block	Number of units	3 (within SDC Building)
Beneficiary /classroom	20	Total beneficiaries	40 students (secondary School) 150 students regularly attending classes in Science Lab
Sanitary facilities	7 toilets (6 girls, 1 boys) 6 urinals	Other infrastructure (within SDC Building)	1 Principal's Office 1 Science lab 1 Computer Room 1 Hall
Ground floor (covered area) (Building donated by SDC)	161.72 m ²	Floor levels (Building donated by SDC)	2
Total surface (Building donated by SDC)	323.44 m ²	Surface / beneficiary	1.70 m ² / beneficiary
Volume (outside dim.) (Building donated by SDC)	1'075.50 m ³	Volume / beneficiary	5.66 m ³ / beneficiary
Heated surface	No heating	Electrification	Yes (but no light in classrooms)
Cost per m2	90.17 USD	cost/beneficiary	153.51 USD/beneficiary
Total cost (1US\$=110.05 LKR)	29'167.65 USD (3'209'900.00 LKR)	Self help (beneficiaries)	0 USD/beneficiary
		No self help	

Legal framework

Political attachment	Through the bilateral agreement between SDC and the Government of Sri Lanka followed by an MoU between SDC-HA and PTF
Type of ownership	District Education Department on behalf of Ministry of Education Northeast Province

Relevant building construction costs (excl. planning, design and supervision)

Construction	
Demolition Works	40'000.00
Excavation and Earth Works	30'200.00
Concrete Work	109'260.00
Reinforced Cement Concrete Works	1'088'760.00
Masonry Work	147'500.00
Concrete Block Work	417'950.00



Humanitarian Aid construction group

Tinker and Metal Work	140'000.00
Roof Work	433'500.00
Carpenter & Joiner Works	212'010.00
Plaster Work	338'250.00
Painting	42'297.50
Miscellaneous Works	234'600.00
Subtotal	3'234'327.50
Less Discount	24'427.50
Total in LKR	3'209'900.00
Total in USD	29'167.65

Urban planning

Distance to:	Next village	3 km
	Public transport	No public transport available
	A9 Main road	500 m

For further information

Involved SDC-HA construction group consultants	R. Ivan Hauri
Other involved SDC-HA consultants	S Kuganathan
Author / Contact:	Srikantha Rajaratnam srikantha.rajaratnam@sdc.net
Recommended Institutions:	N / A
Recommended partners:	N / A
Recommended books/reports:	Further information (drawings, contracts...) on construction group website or email above available
Relevant other projects (links):	Project Document of the Cash for School Program, Sri Lanka, containing the reconstruction of Schools. Website: www.cfhsrilanka.com



Relevant illustrations

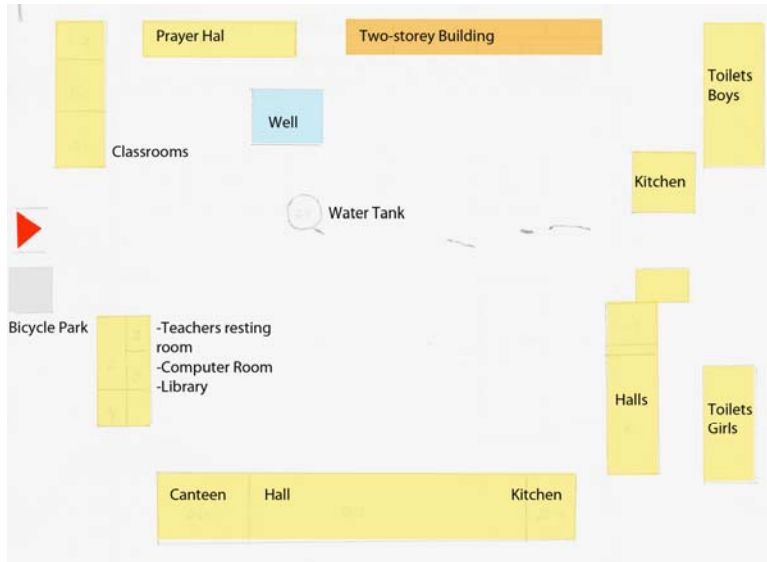


1L	Two Storey Building donated by SDC
2R	Neighbour Classroom Buildings and Prayer Hall (not SDC)



3L	Stage (not SDC)
----	-----------------

Relevant Drawings:



1	General Layout
---	----------------