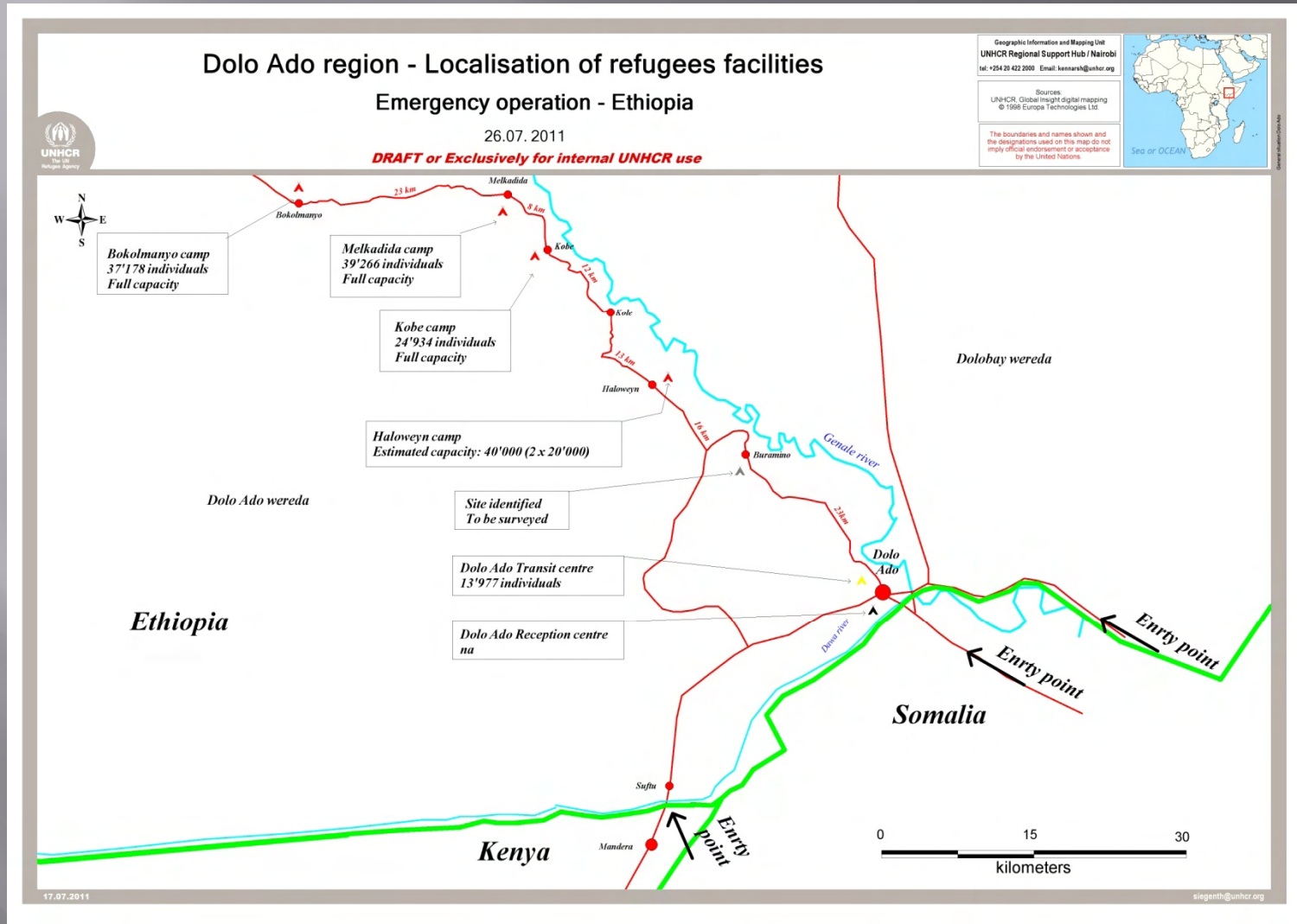


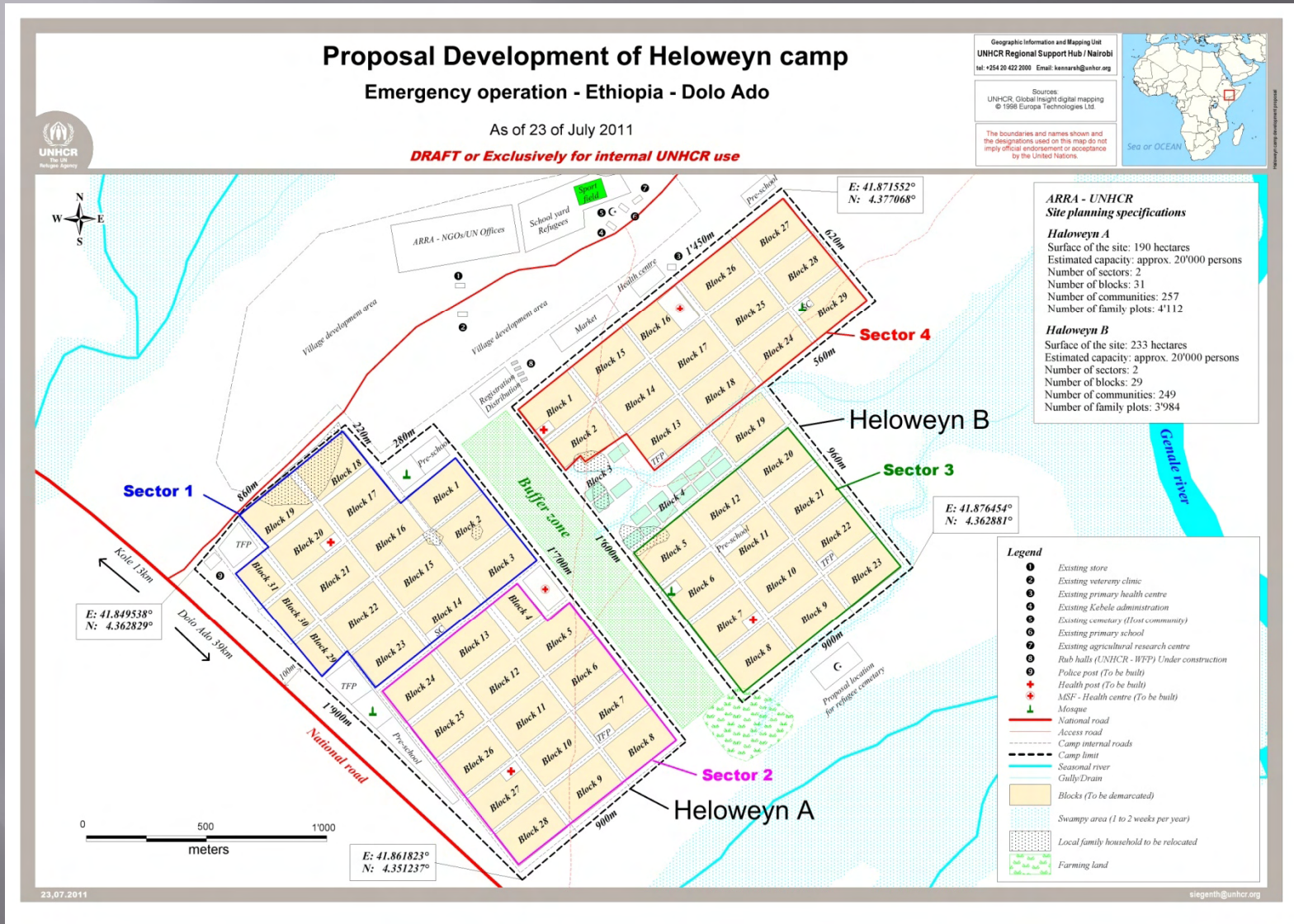
Case study – Emergency Ethiopia



Case study – Emergency Ethiopia



Case study – Emergency Ethiopia



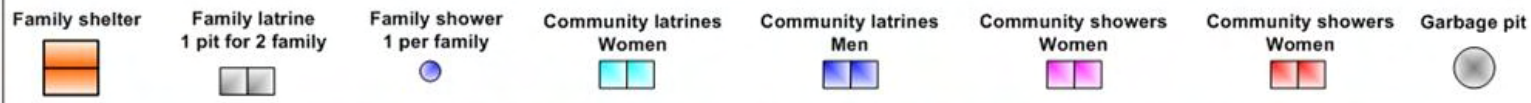
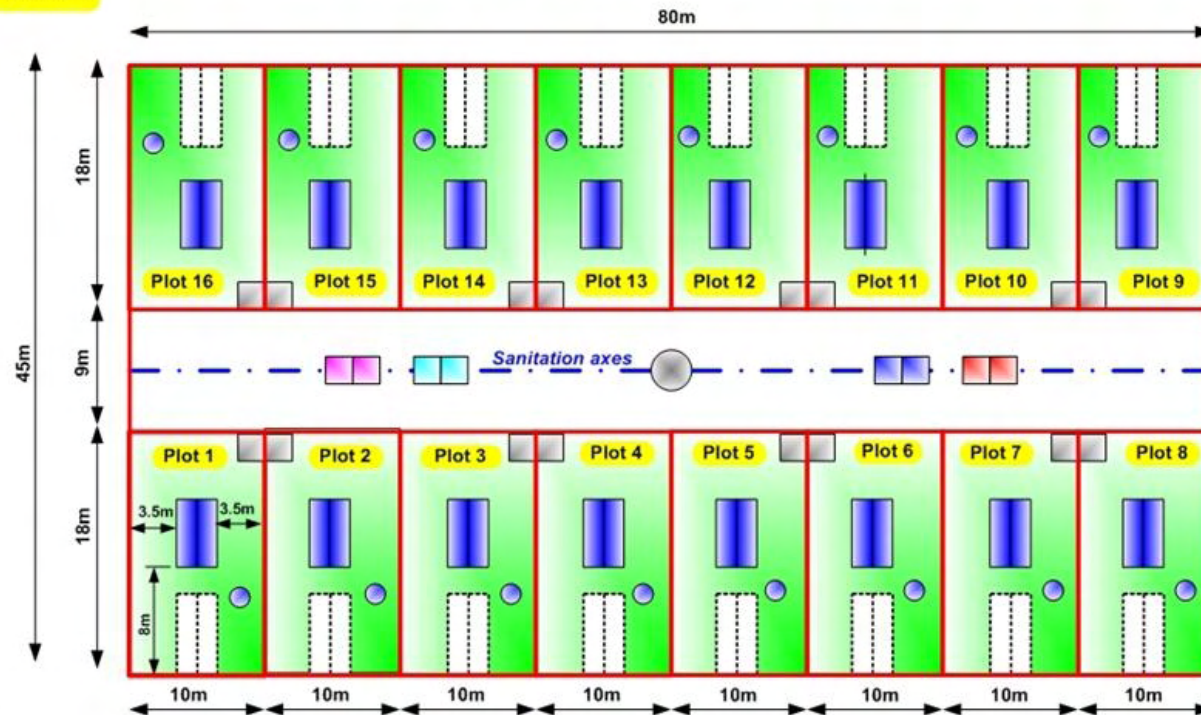
Case study – Emergency Ethiopia



PROPOSAL OF COMMUNITY LAYOUT / Emergency Dolo Ado 2011

Total surface: 3'600 m²
 Number of plots: 16
 Estimated capacity: 80-100 persons

Proposal layout for COMMUNITY



Produced by: RSH Kenya / 17.07.2011 OS

!!!! Community latrines and showers to be built before refugees arrival at camp !!!!



Case study – Emergency Ethiopia



Case study – Emergency Ethiopia



Case study – Emergency Ethiopia



Case study – Emergency Ethiopia

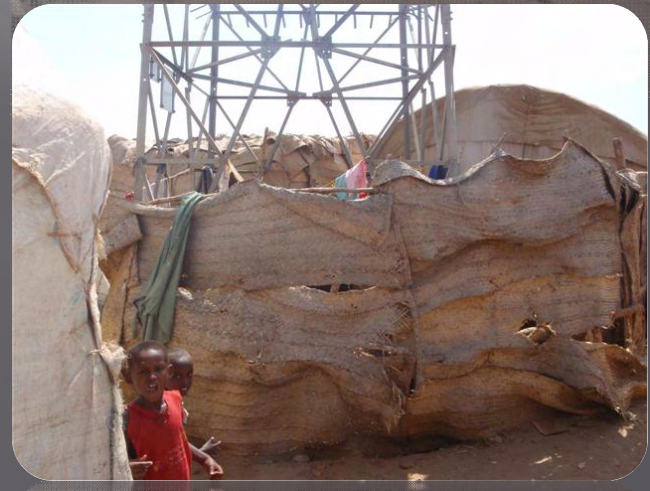


Case study – Emergency Ethiopia

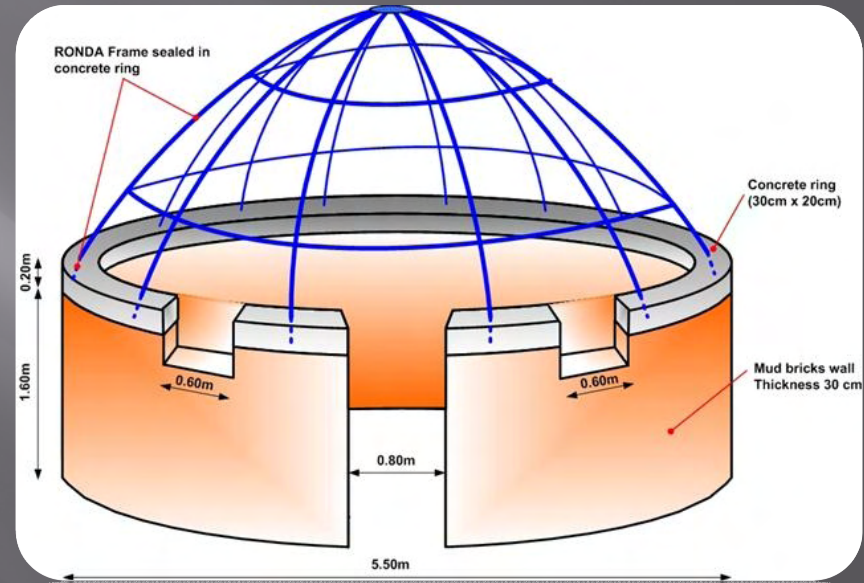


Case study – Existing refugees camp - Eritrea

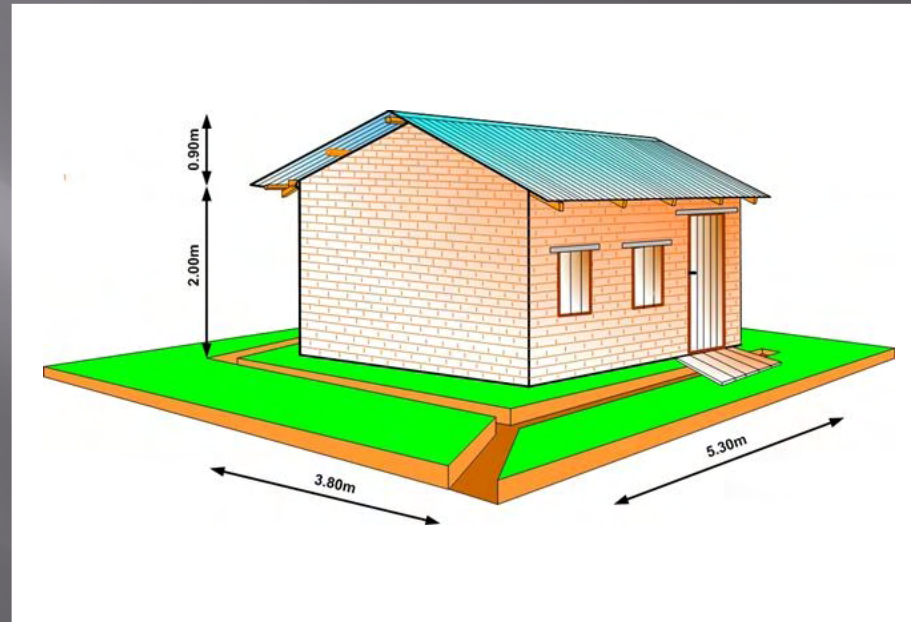
No site planning consideration ????



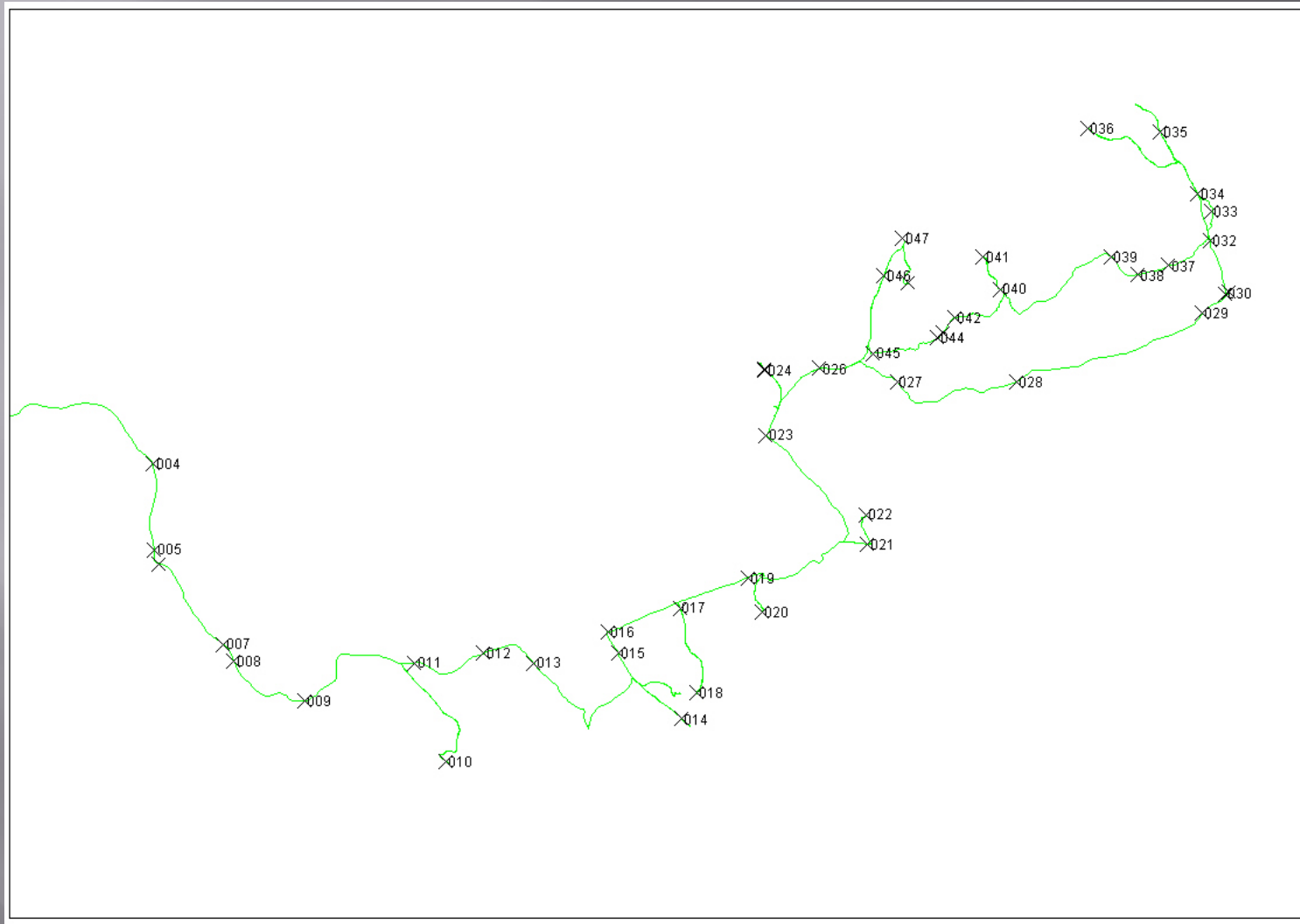
Case study – Existing refugees camp - Eritrea



Case study – Existing refugees camp - Eritrea



Case study – Existing refugees camp -Uganda



Case study – Existing refugees camp -Uganda

