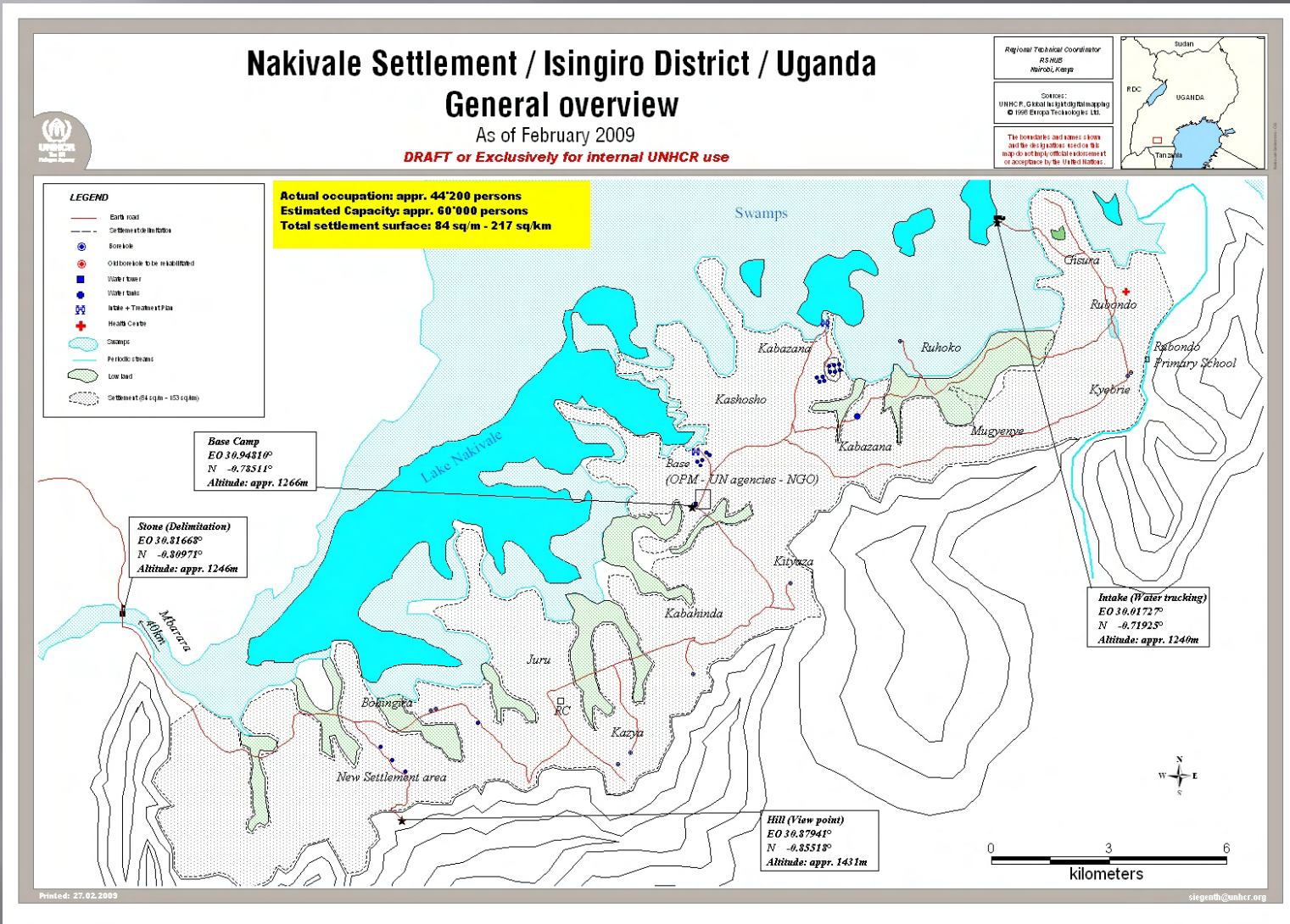


Case study – Existing refugees camp -Uganda

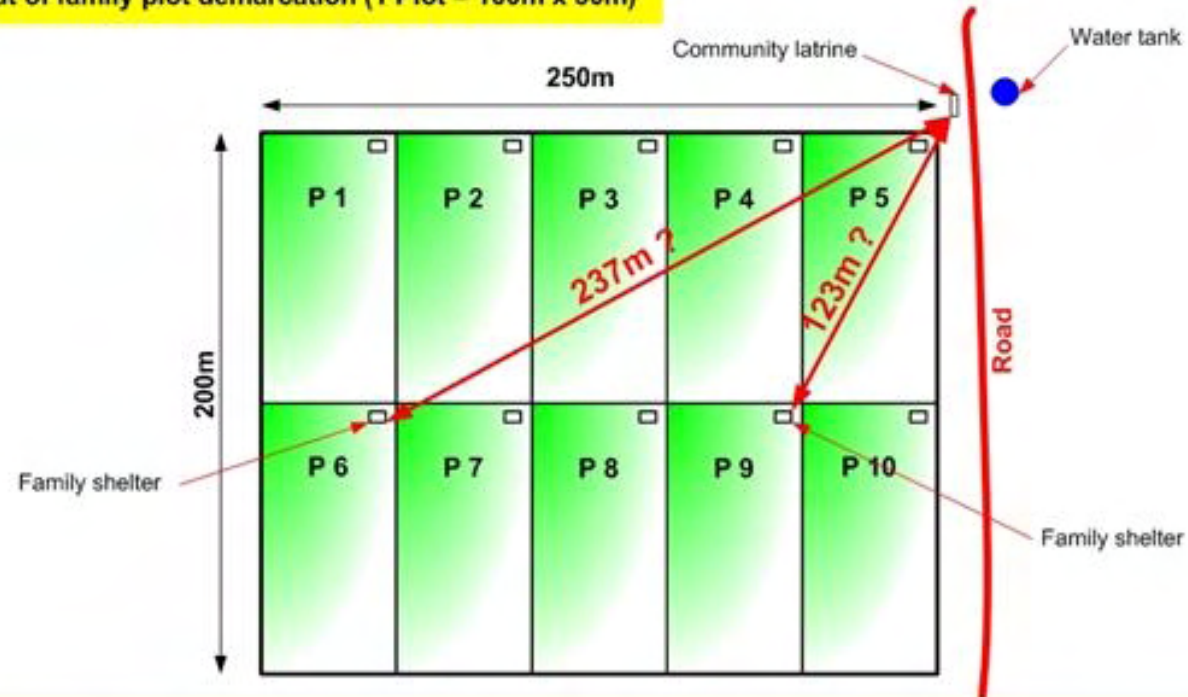


Case study – Existing refugees camp -Uganda



Nakivale / Kyangwali Settlements – Site Planning / Uganda 2009

Actual layout of family plot demarcation (1 Plot = 100m x 50m)



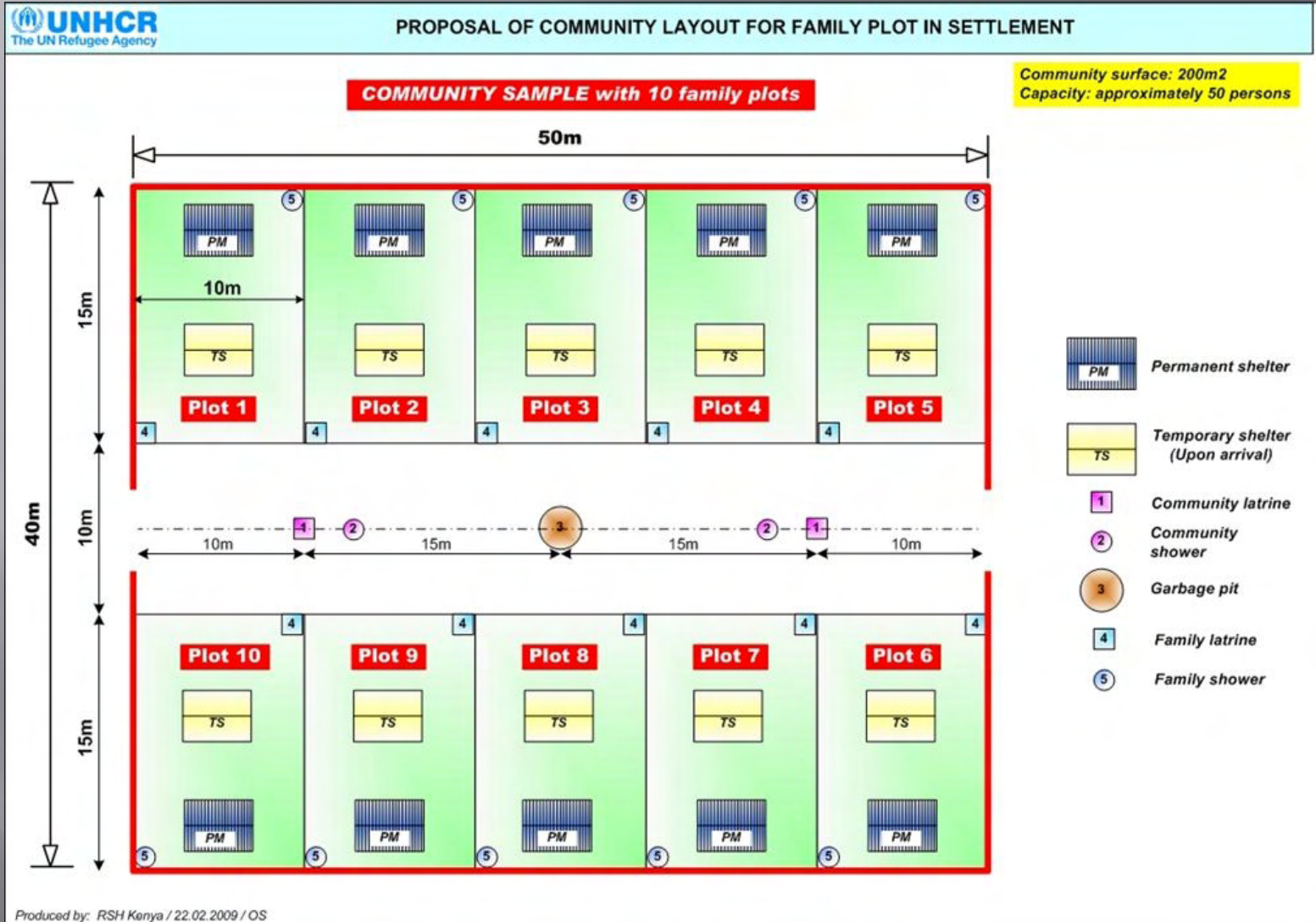
Remarks

- Advantage:** - Big surface of land that provide easy and quick access to farming activities and autonomy to beneficiary
- Disadvantages:** - Distance to communal latrine too long especially for women and children (Consequently defecation are taking place at the back side of the family shelter....)
- Isolated family shelter at high security risks (Especially for women alone with children)
- Shelter located very far from facilities such as water point, health centre, road, school, etc.
- Proposal:** To provide two plots at each family, one plot for accommodation (10m x 15m) close to facilities (Road, water point, school, health centre, etc.) and one plot for farming activities (100m x 50m). By this way land allocated for farming activities may also be selected at low land areas which will provide additional land at disposal. In the meantime creation of new villages will be under the control of OPM.

Produced by RSH Nairobi 22.09.2009 - OS



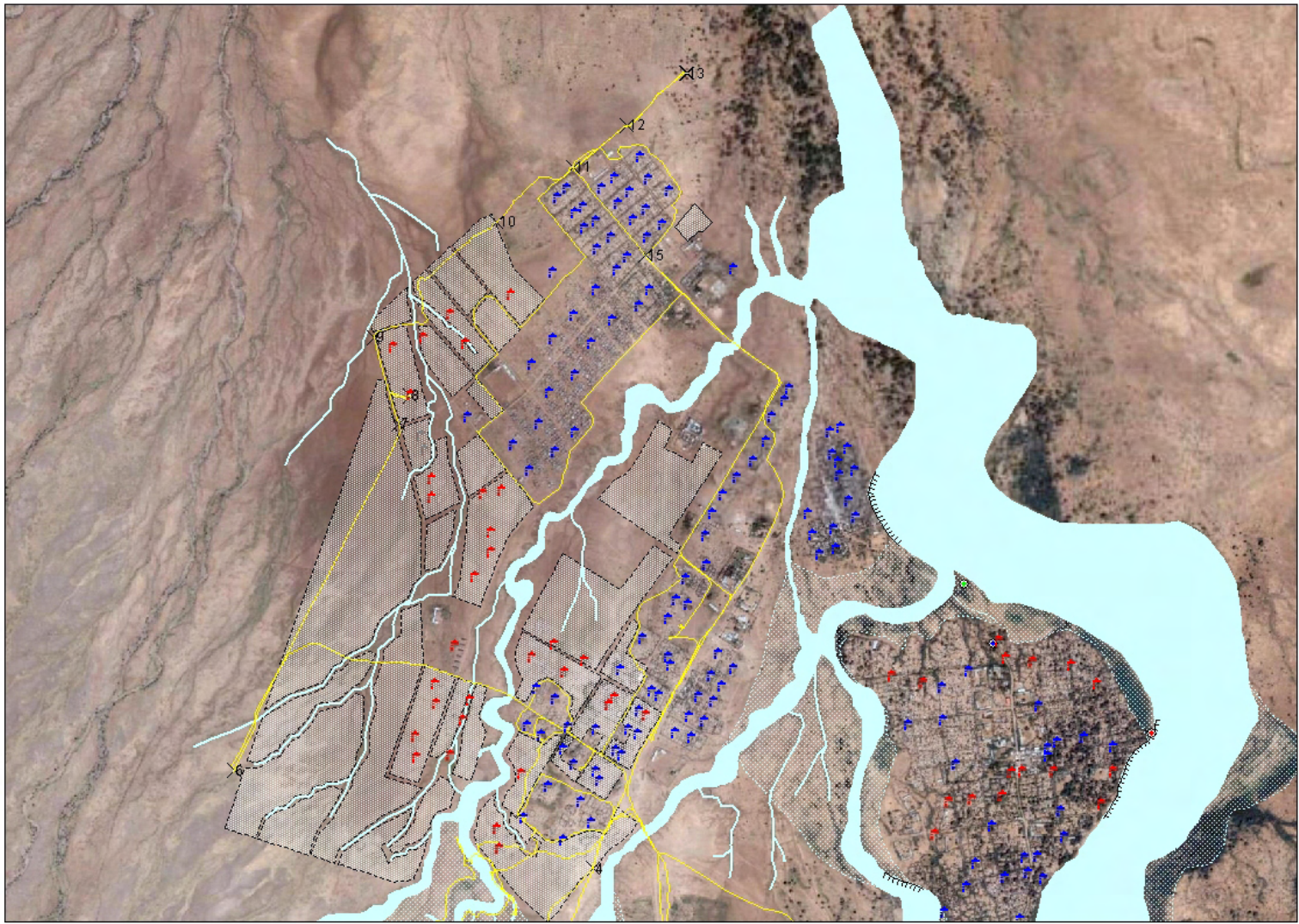
Case study – Existing refugees camp -Uganda



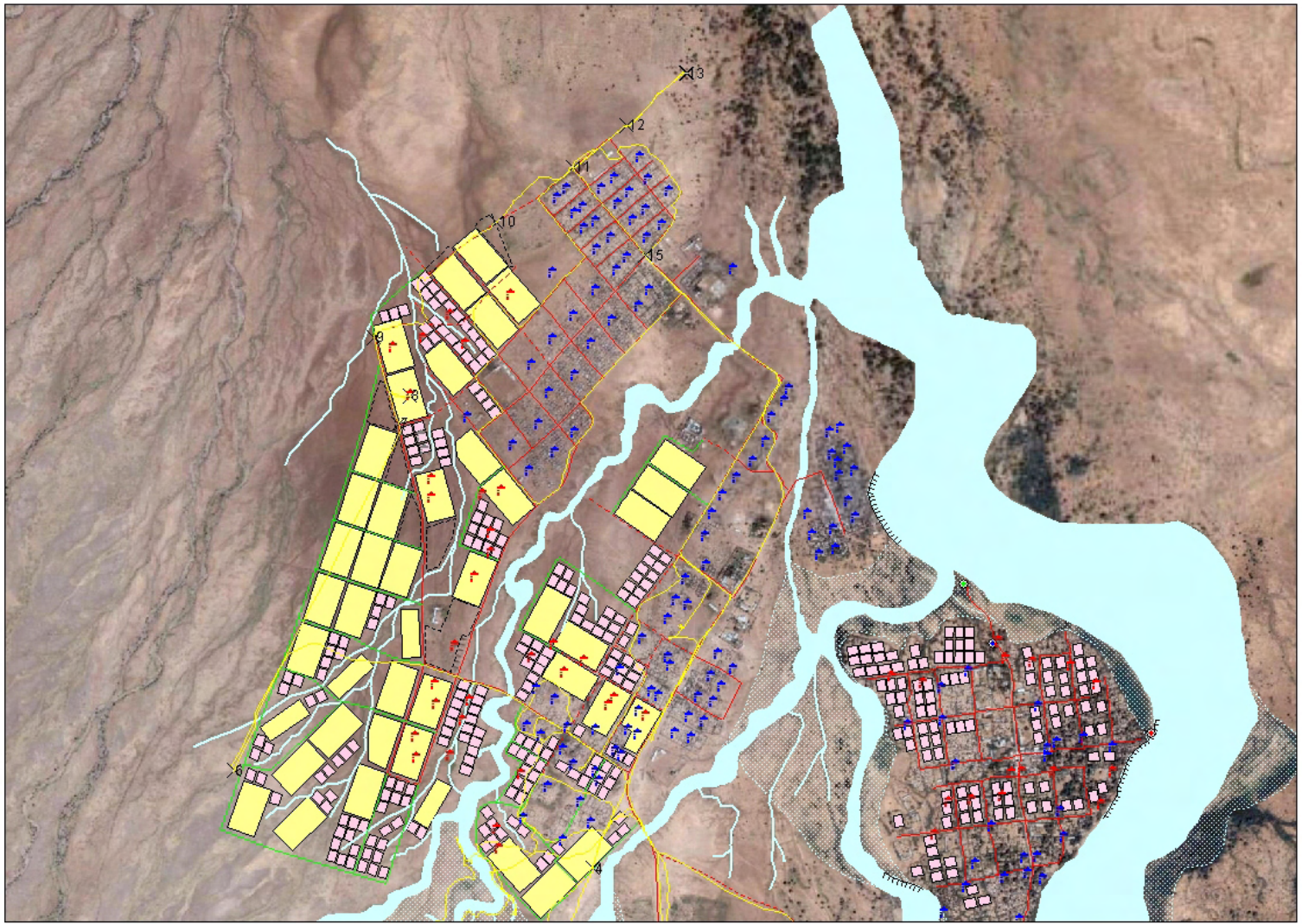
Case study – Existing refugees camp - Kenya



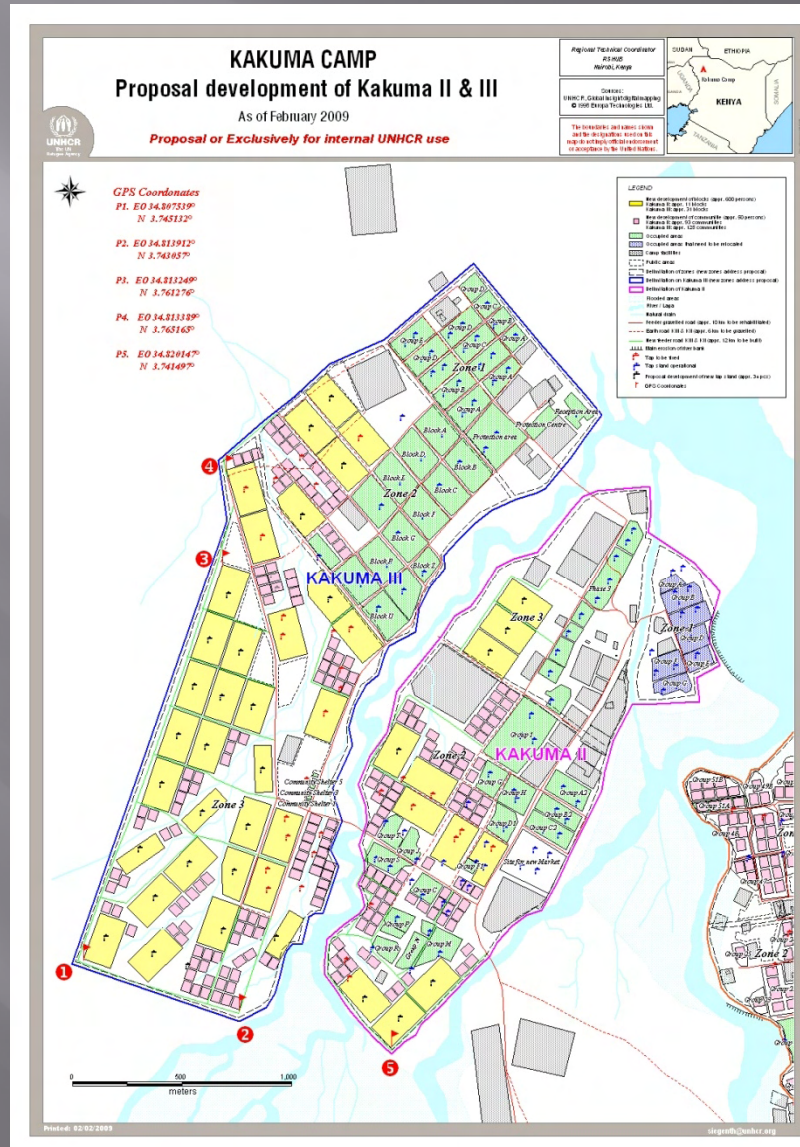
Case study – Existing refugees camp - Kenya



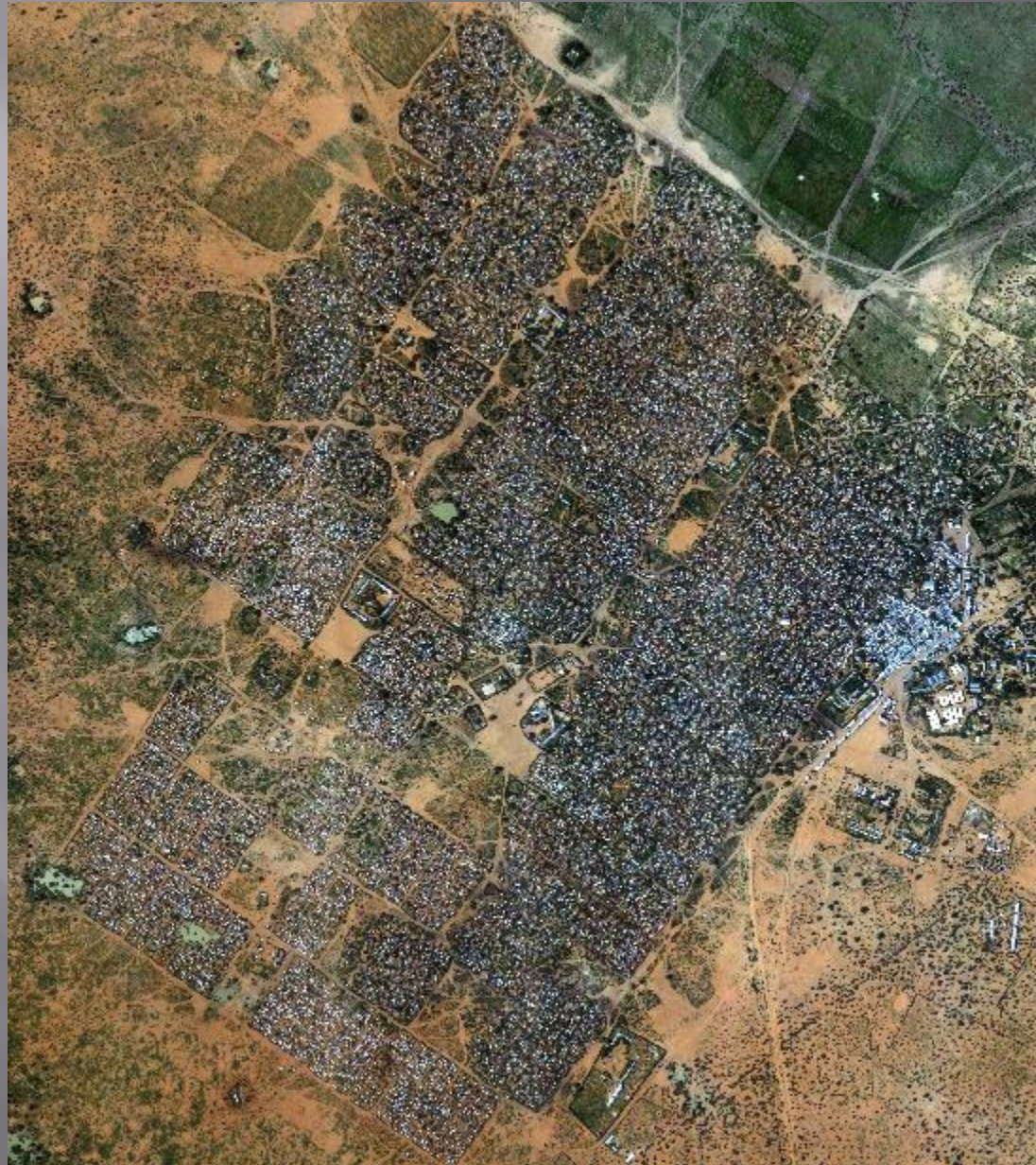
Case study – Existing refugees camp - Kenya



Case study – Existing refugees camp - Kenya



Case study – Existing refugees camp - Kenya



Case study – Existing refugees camp - Kenya



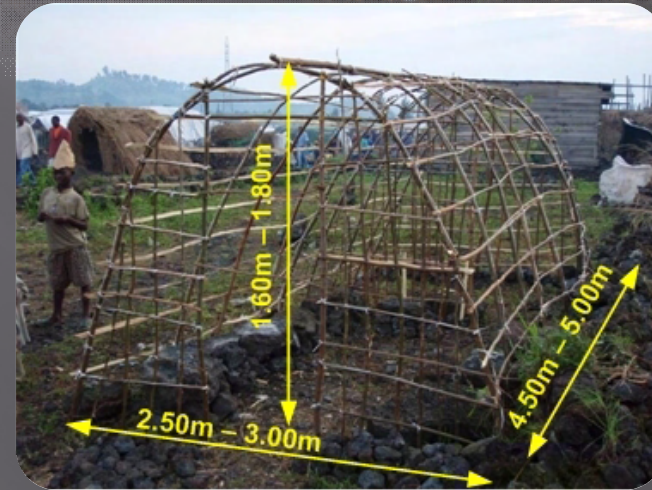
Case study – Existing refugees camp - Kenya



Case study – Existing refugees camp – Kenya Visit of Madame Calmy-Rey



Examples of other shelter in the region Congo (RDC – IDPs camp)



Examples of other shelter in the region Ethiopia



Examples of other shelter in the region Uganda

