

Temporary Learning Space in Kayin state

Embassy of Switzerland, Swiss Cooperation Office Myanmar

Provision of a temporary learning space in emergency to be a safe learning space for the students in a remote and conflict affected areas



In addition to the COVID-19 pandemic, armed conflicts has put considerable pressure on ethnic basic education providers (EPEPs) to provide learning spaces for the students. As a result of the collapsing national education system, the influx of students doubled for example to areas controlled by the Karen National Union (KNU), which currently administrates 1,091 schools through the Karen Education and Culture Department (KECD). The Swiss Agency for Development and Cooperation (SDC) supports the KECD to establish a more structured and systematic system of managing and strengthening school infrastructure in central Karen State by developing their own school construction guidelines through school renovations, WASH infrastructure and temporary learning. Through this project, two Education in Emergency (EiE) temporary school were provided to respond to the growing needs of school spaces during these crisis.

Background

Karen Education and Culture Department (KECD) was established in 1956 and focuses on safeguarding the

educational rights of Karen people in this low resource environment. KECD administers around (1,361) schools including (400) community schools and (600) mixed-administration schools located across often hard-to-reach areas in Karen and Mon States as well as Tanintharyi and East Bago Regions. KECD services focus on the administration of basic and higher education schools, staff training, curriculum design, setting learning standards and standard examinations, and community mobilization.

Construction of Temporary Learning Space in Kayin State

<p>LEARNING SPACE</p> <ul style="list-style-type: none"> 22.5m x 8.4m (open space type) 1 set solar lighting 	<p>WASH</p> <ul style="list-style-type: none"> 3 units toilet
<p>BENEFICIARY</p> <ul style="list-style-type: none"> 100 Students 	<p>BUDGET</p> <ul style="list-style-type: none"> 16126.8 CHF funded by Switzerland
<p>STAKEHOLDER</p> <ul style="list-style-type: none"> Karen Education and Culture department (KECD) Karen Union Party (KNU) School Committee 	<p>LOCATION</p> <p>New Tar Khee village, Hlaingbwe township, Hpa An, Kayin state</p>
<p>Timeline</p>	

Activity	Duration	Workman force
Foundation Work	7 days	<ul style="list-style-type: none"> Mason – 3 nos Worker – 3 nos
Frame installation and roofing work	7 days	<ul style="list-style-type: none"> Steel fixer – 4 nos

Objective

- To construct a safe learning space for students during an armed conflict with limited logistical arrangements and timeline.
- To gain lessons learned from EIE infrastructures in order to replicate the construction for future urgent needed classrooms

Implementation

The project was implemented by KECD in collaboration with the village school committee and contracted to a local contractor (Royal King Construction Com. Ltd) to build the temporary learning space. The school design is based on a previously built migrant school in the area of Mae Sot. With the support of the Bangkok based architect Juan Cuevas, who was involved through a.gor.a architects with the former design, supported the redesigned school. The objective for choosing this design is to prefabricate all members and carry them by truck to the site and assemble the light frames in a quick and efficient way to reduce critical time spent on site during a crisis. Having a flexible space design allows for adjustments to the needs and finally the structure can be disassemble and used for various school sites depending on their changing needs.



Earthwork excavation

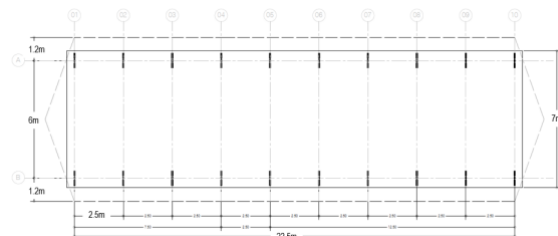
Installing the main frame of school building



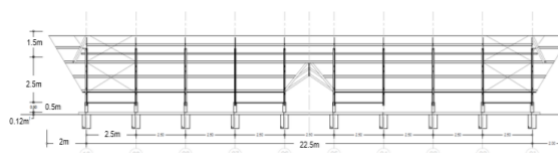
Roofing work

Bench and transparent roof

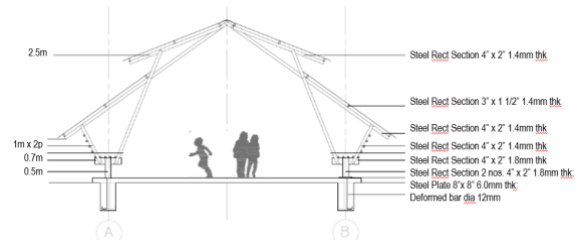
The main material for the structure of the classroom is steel as it is longer life-span, and can resist possible damage in transportation. Using steel also prevents deterioration caused by the tropical climate in the region. The roof is designed very low, breaking the gable into two elements. This prevents the rain from coming inside the building and also brings natural light and ventilation throughout. While this building has been used for educational purposes, it can also be used for many different functions where the context requires a dignified temporary building response.



Floor Plan



Section



Achievement

Temporary learning space was constructed as a pilot school for emergency education in the KNU area. Over hundred students can access the safe learning space in conflict area.



Lessons Learnt

- A safe and child friendly school construction guidelines can be adopted to a temporary learning space for education in emergency (EIE)
- The space allows many different functions depending on the required context.
- The completed building is a showcase of a well-designed flexible learning space
- The main members of the infrastructures are easy to dismantle and transport to another location to reinstall
- Ideally, it should be used thatched roof for roofing to reduce the noise from rain drop

IMPRESSUM

Embassy of Switzerland
Swiss Cooperation Office Myanmar
Vantage Tower, 623 Pyay Road
Kamayut Township, Yangon, Myanmar

yangon@eda.admin.ch / www.eda.admin.ch/yangon